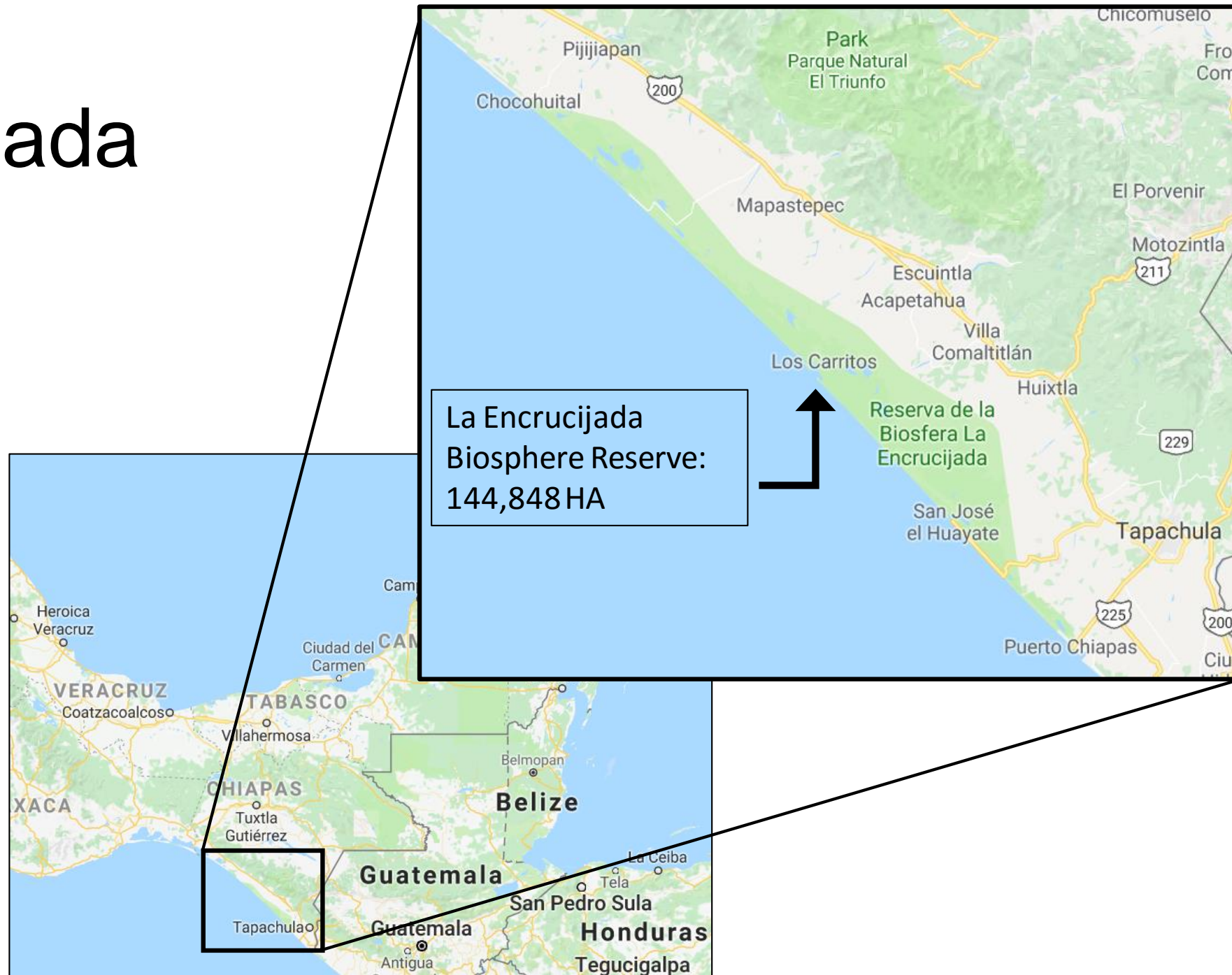
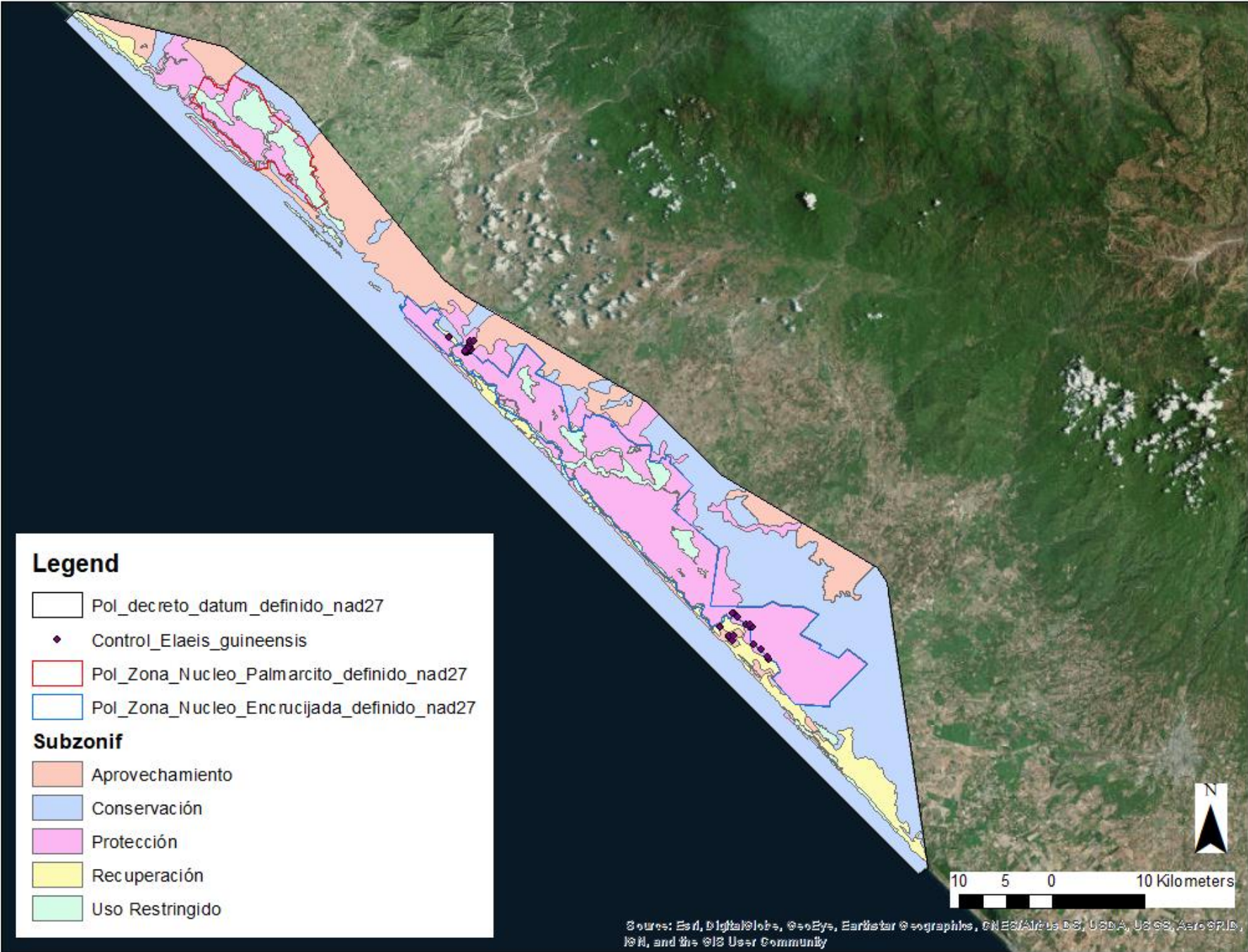


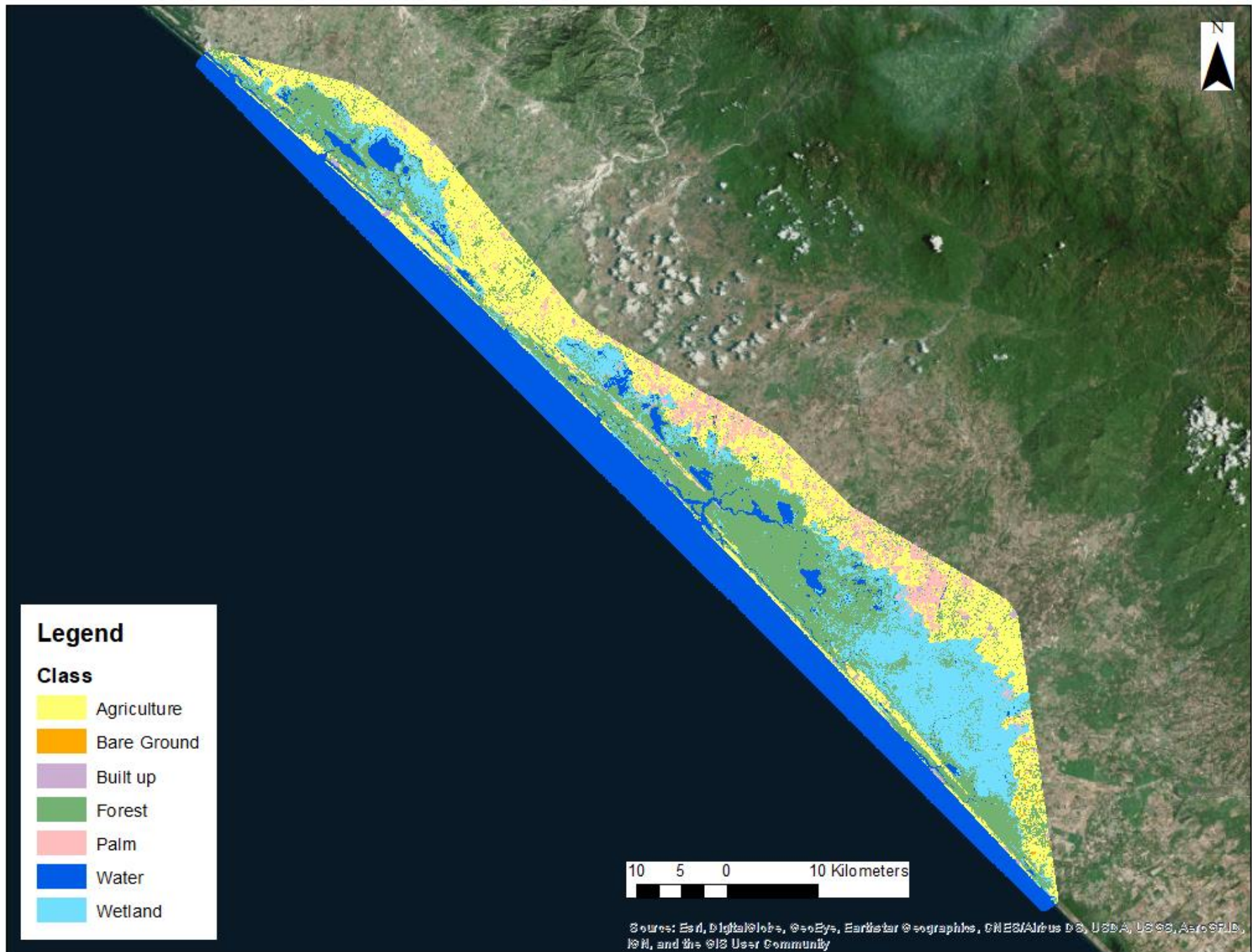
La Encrucijada



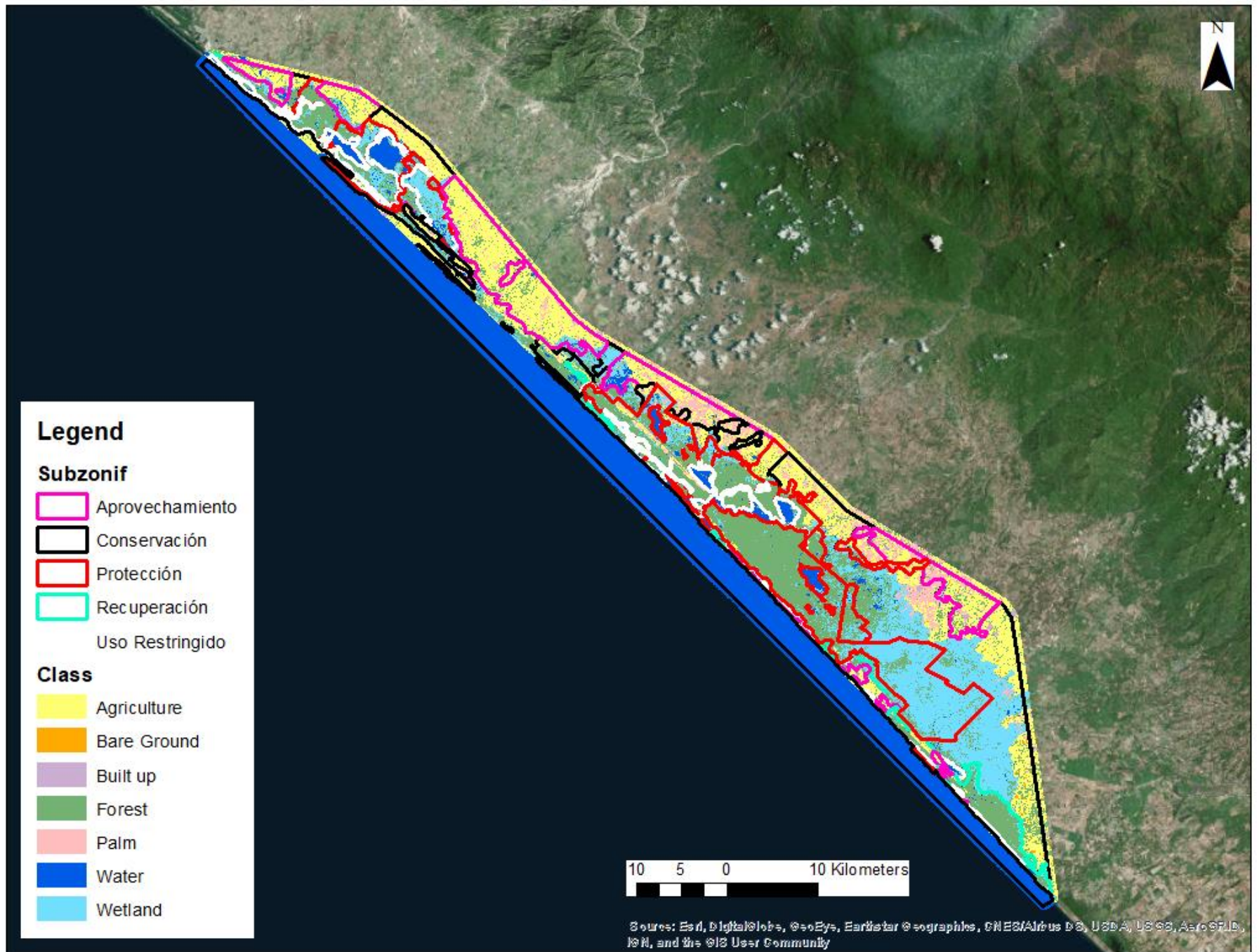
Management Plan



Land use classification (Airbus satellite technology)

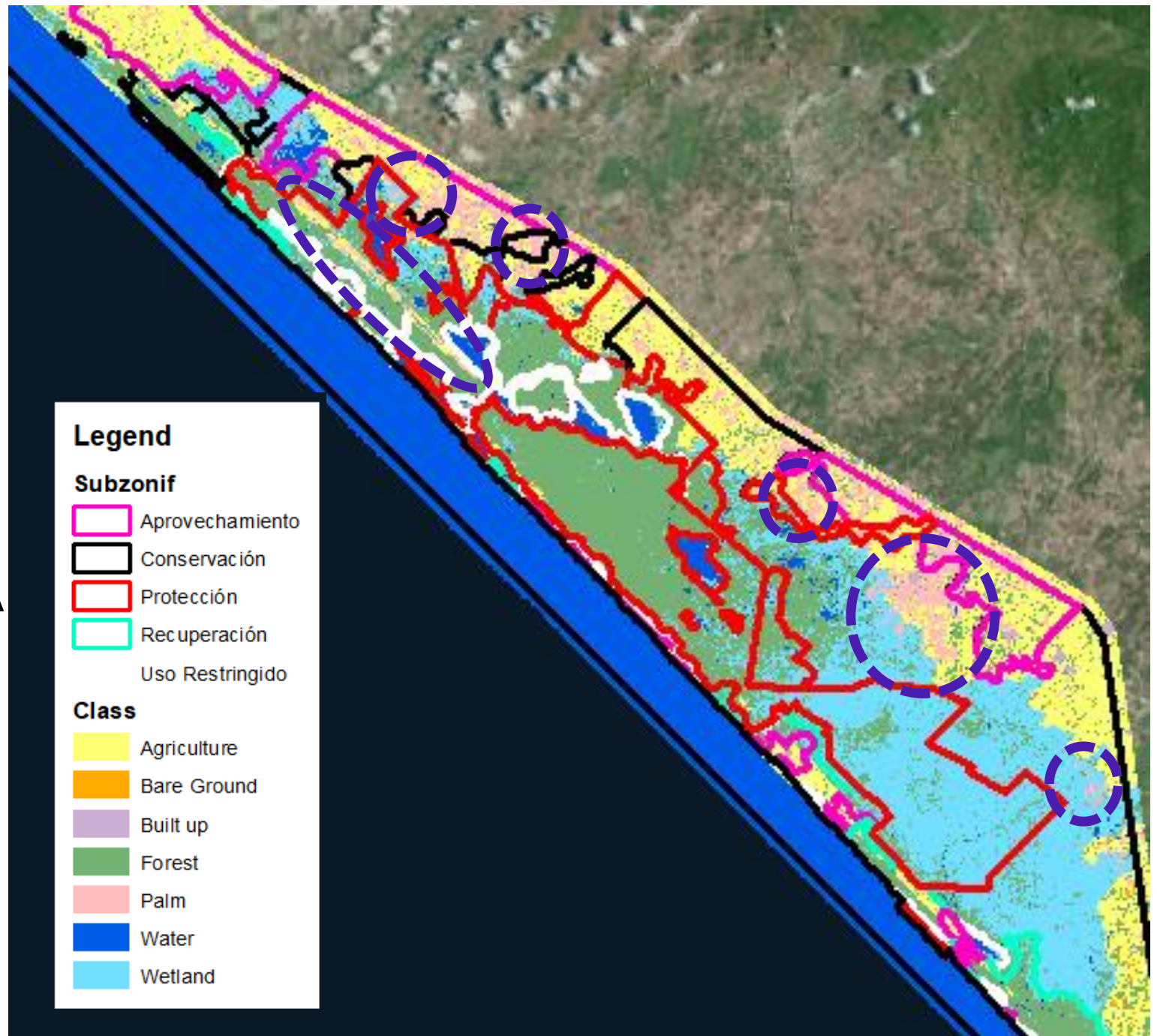


Land use classification with Management Plan boundaries



Palm oil statistics:

- Total: 8,158 HA
- Buffer zone: 6,656 HA
- Core Palmarcito: 13 HA
- Core Encrucijada: 403 HA
- Management Plan:
 - *Aprovechamiento*: 3,044 HA
 - *Conservación*: 2,914 HA
 - *Protección*: 810 HA
 - *Recuperación*: 43 HA
 - *Uso Restringido*: 1 HA



The Alternatives?

What's worse than palm oil for the environment? Other vegetable oils, IUCN study finds

by Hans Nicholas Jong on 2 July 2018

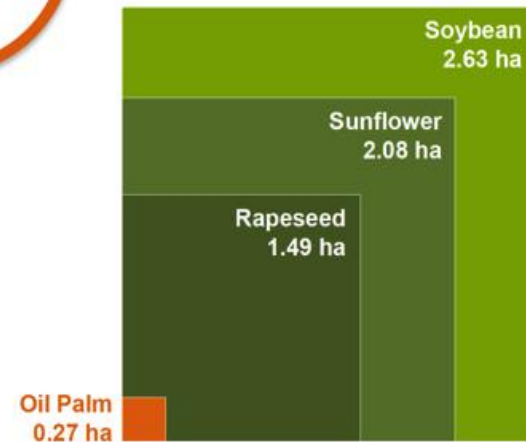


Mongabay

EFFICIENCY

Yield:

Area required to produce 1 metric ton of vegetable oil for major oil crops.



Consumption:
Palm oil as percentage of global vegetable oil use



Production:
Oil palm as percentage of global oil crop cultivation area